

Test-it™ Typhoid IgM Lateral Flow Assay

A screening test for disease specific IgM antibodies in human whole blood.

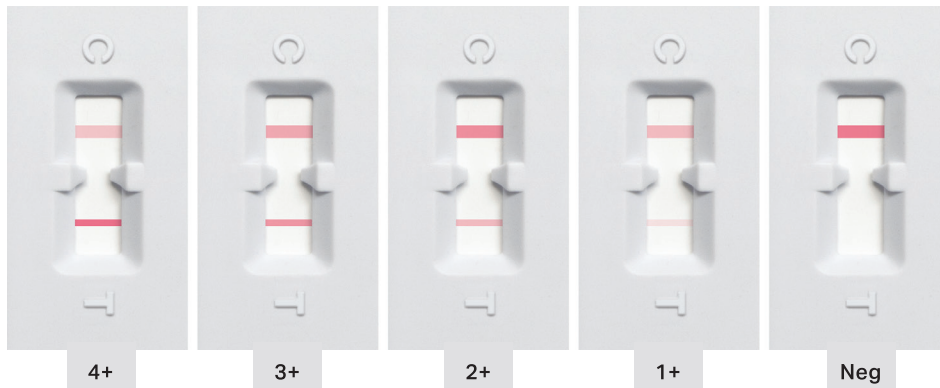
What is Typhoid Fever?

Typhoid fever is a mild illness with low-grade fever, malaise, and slight dry cough which can progress to a severe disease with abdominal discomfort and multiple complications. Clinical signs and symptoms may resemble other major infectious diseases.

Test Procedure

1. Remove a Test-it™ Typhoid cassette from its foil sachet. Check that the expiry date has not been exceeded.
2. Draw up whole blood to the mark on the pipette (2 ul). Transfer the sample to the sample well indicated by an arrow.
3. Holding the buffer bottle upright, add 4 freefalling drops of buffer solution (130 µl) to the sample well. The tip of the buffer bottle should never touch the blood deposited in the sample well.
4. Start timer and read results at exactly 10 minutes. Reading results earlier or later will give false results.

2 ul mark



Interpretation of Test Results

Positive Result: Indicated by the presence of a line at the test zone (T) and a line at the control zone (C). A positive result is consistent with acute typhoid fever.

Negative Result: Indicated by absence of a line at the test zone (T) and presence of a line at the control zone (C). If a negative result is obtained for a sample collected very early in the disease testing of a second sample collected a few days later may show seroconversion.

Test Limitations

The sensitivity and specificity of the product depend on various factors including stage of disease, previous antibiotic usage, and operator interpretation. The intensity of the Control line (C) may vary from test to test. A weak Control line (C) does not disqualify the test and has no influence on the validity of the test result (T) whatsoever.

Notes

Store at room temperature between 4°C and 28°C (39°F and 82.5°F). Keep away from direct sunlight. Do not freeze the tests. The product is strictly intended for screening purposes only. The decision to treat or not to treat should never be based on the result of this test alone, and must be made taking the patient's clinical assessment and confirmatory laboratory test results into consideration.

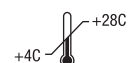
For frequently asked questions, visit our website www.lifesadx.com



Manufactured for Lifesadx (Pty) Ltd by:
Lifeassay Diagnostics (Pty) Ltd, Cape Town, RSA
info@lifesadx.com



TYP001




Always read instructions before use



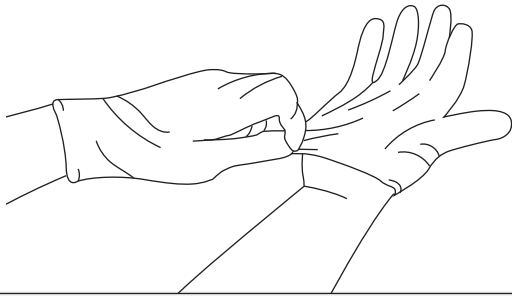
Test-it Typhoid IgM

Job Aid for Finger Stick

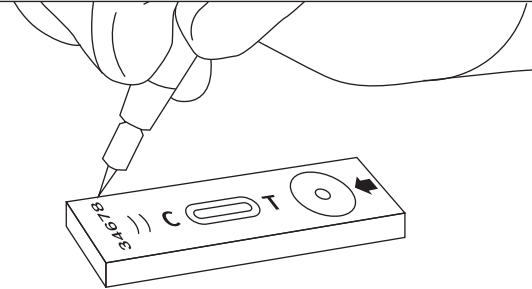
1 Check expiry date printed on the foil pouch. If expired, do not use.

 10/2023

2 Put on gloves. Use new gloves for each patient.

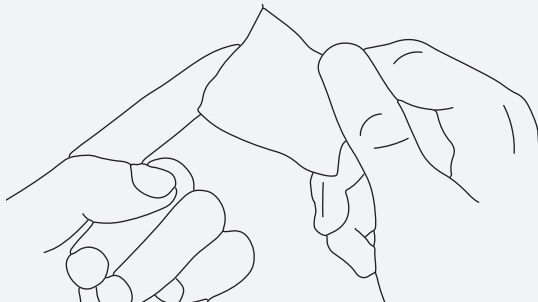


3



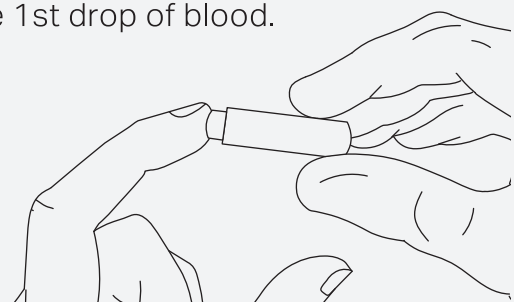
Write the patient number or ID code on the test cassette.

4 Use alcohol swab to wipe finger. Finger must be dry before pricking.

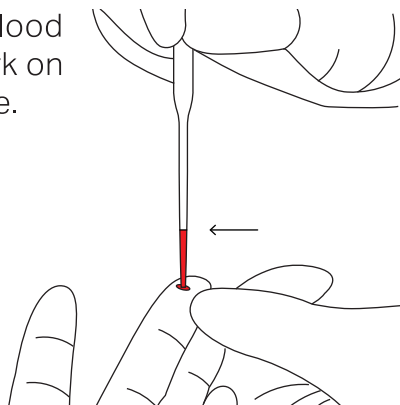


5

Use a lancet to get finger stick blood. Wipe away the 1st drop of blood.

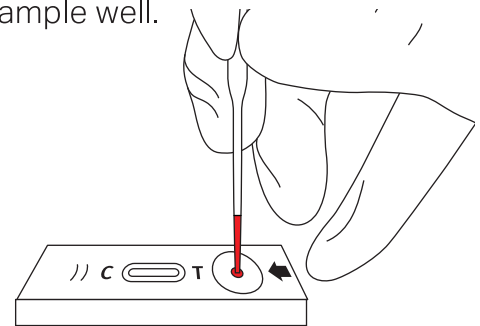


6 Draw up blood to the mark on the pipette.



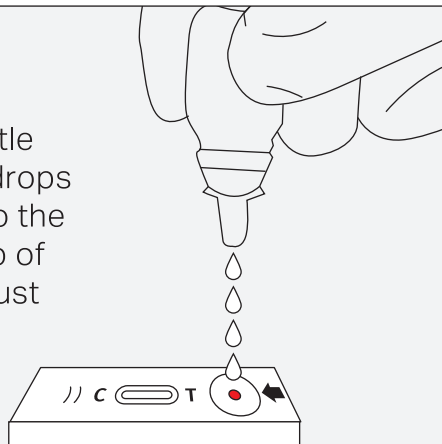
7

Transfer the blood to the sample well.



8

Hold the buffer bottle upright and add 4 drops of buffer solution to the sample well. The tip of the buffer bottle must not touch the blood on the cassette.



9

Start timer and read the result at exactly 10 minutes.

